

GATE FITTINGS

[BARNTRACK & FITTINGS](#)

[CANTILEVER GATE FITTINGS](#)

[CENTERSTOPS](#)

[CLAMPS](#)

[FORK LATCH](#)

[GATE CLOSERS](#)

[GATE CORNERS](#)

[HINGES - INDUSTRIAL](#)

[HINGES - INDUSTRIAL - BALL & SOCKET](#)

[HINGES - RESIDENTIAL](#)

[HINGES - RESIDENTIAL - STRAP HINGE](#)

[HOLDBACKS](#)

[I BEAM](#)

[J BOLT HINGE](#)

[KENNEL FITTINGS](#)

[LAG SCREWS](#)

[LATCH - INDUSTRIAL - DOUBLE](#)

[LATCH - INDUSTRIAL - SINGLE](#)

[LATCH - RESIDENTIAL - AUTOMATIC](#)

[LATCH - RESIDENTIAL - BUTTERFLY](#)

[LATCH - RESIDENTIAL - DOUBLE](#)

[LATCH - RESIDENTIAL - SINGLE](#)

[ORNAMENTAL HARDWARE](#)

[OVERHEAD SLIDE GATE FITTINGS](#)

[PANIC BAR](#)

[ROLLING GATE HARDWARE](#)

[ROUND POST HARDWARE](#)

[SCROLLS](#)

[WALL BRACKET](#)

[WHEEL FOR SWING GATE](#)

[WOOD POST HINGES](#)

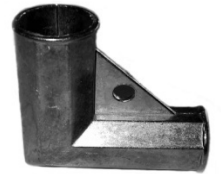
Code	Item	Wt. Per 100	Bundle Quantity	Price
------	------	----------------	--------------------	-------

GATE CORNERS

ALUMINUM GATE CORNER — HEX — Die Cast / Not Drilled

Order (4) - 1/4" x 2" Machine Bolts.

GCA-13H	1-3/8"	41	100	\$2.67
---------	--------	----	-----	--------



ALUMINUM GATE CORNER — Die Cast / 3-Bolt

No drilling necessary - (3) - 1/4" x 3/4" carriage bolts included.

GCA-13-3	1-3/8"	41	100	\$2.80
----------	--------	----	-----	--------



PRESSED STEEL GATE CORNER — RESIDENTIAL — 14 Gauge

GCP-13T	1-3/8" Top	71	50	\$1.99
---------	------------	----	----	--------

GCP-13B	1-3/8" Bottom	81	50	\$2.39
---------	---------------	----	----	--------



PRESSED STEEL GATE CORNER — INDUSTRIAL — 12 Gauge

Order (4)-5/16" x 2-1/2" Machine Bolts.

GCP-15	1-5/8"	150	50	\$4.31
--------	--------	-----	----	--------

GCP-2	2"	190	25	\$5.11
-------	----	-----	----	--------



SCROLLS

GATE SCROLLS — 3 PIECE

Attach with 1/4" Scroll Screws.

SCR-18	18"	108	10	\$2.24
--------	-----	-----	----	--------

SCR-24	24"	139	10	\$3.43
--------	-----	-----	----	--------

SCR-36	36"	140	10	\$6.44
--------	-----	-----	----	--------

SCR-48	48"	144	10	\$7.49
--------	-----	-----	----	--------



Code	Item	Wt. Per 100	Bundle Quantity	Price
------	------	----------------	--------------------	-------

RESIDENTIAL HINGES

PRESSED STEEL FEMALE HINGE — 1" x 8 Gauge

Order 3/8" Bolt.

FHP-13	1-3/8"	40	100	\$0.87
FHP-15	1-5/8"	46	100	\$1.08
FHP-2	2"	48	100	\$1.27



MALLEABLE FEMALE HINGE — (2)-Piece with bolts included

FHM-13	1-3/8"	41	100	\$1.11
FHM-15	1-5/8"	54	100	\$1.26



PRESSED STEEL MALE HINGE — 1" x 8 Gauge

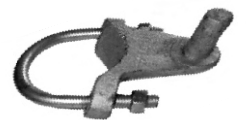
Order 3/8" Bolt.

MHP-13	1-3/8"	58	100	\$1.34
MHP-15	1-5/8"	60	100	\$1.72
MHP-2	2"	67	100	\$1.71
MHP-25	2-1/2"	69	100	\$1.90
MHP-3	3" (Import)	115	50	\$2.90



MALLEABLE MALE HINGE — U-BOLT — Residential Grade

MHM-2	2"	90	100	\$1.99
MHM-25	2-1/2"	100	50	\$2.20
MHM-3	3"	105	50	\$2.27



RESIDENTIAL STRAP HINGE — PRESSED STEEL

SH-203	2" x 1-3/8"	94	100	\$2.52
SH-253	2-1/2" x 1-3/8"	103	100	\$3.14



KENNEL FITTINGS

KENNEL LATCH — PRESSED STEEL

Flip latch with U-Bolt.

KL-13	1-3/8" x 1-3/8"	10	50	\$2.88
-------	-----------------	----	----	--------



KENNEL HINGE — PRESSED STEEL

Allows close fit. Insert into gate.

KH-13	1-3/8"	76	50	\$2.18
-------	--------	----	----	--------



Code	Item	Wt. Per 100	Bundle Quantity	Price
------	------	----------------	--------------------	-------

RESIDENTIAL LATCHES

FORK LATCH PARTS — Pressed Steel

C-13	1-3/8" Clamp	46	100	\$1.09
C-15	1-5/8" Clamp	50	100	\$1.27
C-2	2" Clamp	57	100	\$1.29



F-13	1-3/8" Fork	30	100	\$1.02
F-2	2" Fork	37	100	\$1.29
F-25	2-1/2" Fork	39	100	\$1.34
F-3	3" Fork	85	100	\$1.64



WALL BRACKET — FOR FORK

WB	Non-Plate Type	32	50	\$0.77
----	----------------	----	----	--------



DROP FORK LATCH — PRESSED STEEL — Heavy Duty

FLP-253	2-1/2" x 1-3/8"	106	50	\$2.49
FLP-255	2-1/2" x 1-5/8"	118	20	\$2.60
FLP-305	3" x 1-5/8"	120	20	\$3.43
FLP-405	4" x 1-5/8"	144	20	\$3.12



DROP FORK LATCH — MALLEABLE — Assembled

FLM-255	2-1/2" x 1-5/8"		25	\$4.94
FLM-305	3" x 1-5/8"		25	\$5.19
FLM-302	3" x 2"		25	\$5.70
FLM-402	4" x 2"		25	\$6.45



RESIDENTIAL AUTOMATIC SWING LATCH — MALLEABLE — PAGE

SWL-203	2" x 1-3/8"	195	25	\$0.00	\$3.07
---------	-------------	-----	----	--------	--------



Code	Item	Wt. Per 100	Bundle Quantity	Price
------	------	----------------	--------------------	-------

AUTOMATIC CLOSERS AND LATCHES

GRAVITY GATE CLOSER

GCG203	2" x 1-3/8"	330	10	\$19.52
GCG253	2-1/2" x 1-3/8"	350	10	\$21.90
GCG255	2-1/2" x 1-5/8"	360	10	\$23.90
GCG303	3" x 1-3/8"	380	10	\$22.72
GCG305	3" x 1-5/8"	380	10	\$24.72



AUTOMATIC GATE CLOSER

GC-203	2" x 1-3/8"	100	12	\$15.55
GC-253	2-1/2" x 1-3/8"	110	12	\$16.72



KANT SLAM CLOSER — HYDRAULIC — Indoor or Outdoor

KANT				\$73.98
------	--	--	--	----------------



BUTTERFLY LATCH

BL-203	2" x 1-3/8"	128	30	\$3.91
BL-253	2-1/2" x 1-3/8"	132	30	\$4.27



SPRING LATCH AND RECEIVER — Residential

REC-2*	Receiver - 2"	25	20	\$1.48
REC-25*	Receiver - 2-1/2"	20	20	\$2.60



* (Limited Availability)

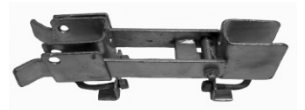
Code	Item	Wt. Per 100	Bundle Quantity	Price
<u>AUTO-CATCH LATCH — DAC</u>				
ACL-133	1-3/8" x 1-3/8"	120	10	\$26.75
ACL-203	2" x 1-3/8"	120	10	\$26.75
ACL-253	2-1/2" x 1-3/8"	150	10	\$26.75
ACL-255	2-1/2" x 1-5/8"	160	10	\$38.61
ACL-305	3" x 1 5/8"	170	10	\$40.04
ACL-302	3" x 2"	170	10	\$38.61



RESIDENTIAL DOUBLE GATE LATCHES

RESIDENTIAL STRONG ARM LATCH — Double Drive

DDR-SAL	1-3/8" Strong Arm Latch		12	\$32.52
---------	-------------------------	--	----	---------



FENCE LOC — CARGO PROTECTORS — Double Drive

DDR-FLB	1-3/8" — Locks in the center		15	\$25.98
---------	------------------------------	--	----	---------



RESIDENTIAL DOUBLE DRIVE LOCKING DEVICE — Aluminum

RDDA-36	36" Fork Alumin	290	10	\$8.82
RDDA-44	44" Fork Alumin	303	10	\$9.74



WOOD POST HINGES

LAG SCREW MALE

LSM-4	5/8" x 4-1/2"	54	100	\$1.97
LSM-6	5/8" x 6"	63	100	\$2.59



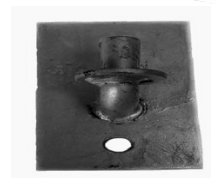
J-BOLT MALE

JBM-45	5/8" x 4-1/2"	90	100	\$2.02
JBM-10	5/8" x 10"	150	50	\$3.78
JBM-12	5/8" x 12"	180	50	\$4.26



MALE PLATE

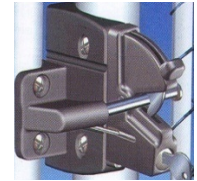
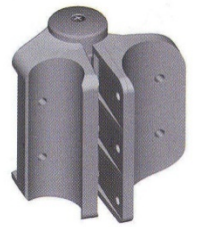
MP	Male Plate	44	25	\$1.78
----	------------	----	----	--------



Code	Item	Price
------	------	-------

D & D - ROUND POST HARDWARE

TCHDRND1-MK2	<p>Tru-Close Round Post Hinge Molded Reinforced Polymer Black Internal Stainless Steel Spring. Self-closing. For Gates Up To 132# 2" - 3" Gate Post; 1 3/8" - 1 5/8" Gate Frame</p>	\$68.42
TCAMA2RND	MULTI ADJUST REGULAR CHAIN LINK	\$57.37
LLARND	LOKK-LATCH ROUND POST	\$41.50
LLABRND	LOKK-LATCH ROUND POST w/ EAK	\$48.03
MLS2RPAKA	ROUND POST ADAPTER MAGNA LATCH	\$15.44



D & D - ORNAMENTAL GATE HARDWARE

Latches

MLTPS2BGA	MAGNA LATCH TOP PULL 20"	\$73.61
MLVPS2BGA	MAGNA LATCH VERTICAL PULL 14"	\$69.55
ZL1A-K	Z LOKK 1" - 1 5/8" Gate Frame	\$95.20
ZL2A-K	Z LOKK 1 3/4" - 2"-1/2" Gate Frame	\$100.69
LLAA	LOKK LATCH SERIES 2 RESIDENTIAL LATCH ONLY	\$27.90
LLAAB	LOKK LATCH SERIES 2 RESIDENTIAL w EAK	\$46.68
LLDA-K	LOKK-LATCH DELUXE (LATCH ONLY)	\$57.69
LLDAB-K	LOKK-LATCH DELUXE (LATCH + EAK)	\$86.74
LLP1S-K	LOKK LATCH PRO with EAK	\$126.08



Z LOKK



LOKK LATCH
DELUXE (LLDAB-K)

Hinge Regular/Residential

TCA1L2-MK2	TRU-CLOSE 2 LEG METAL	\$46.23
KFA	KWIK FIT ADJUSTABLE TENSION	\$25.58
TCAMA2	MULTI ADJUST REGULAR METAL/WOOD/VINYL	\$55.71

Hinge Heavy Duty / Commercial / Industrial

TCHDMA1	MULTI ADJUST HEAVY WOOD/VINYL	\$75.38
---------	-------------------------------	---------

Accessories

LLHBG	RESIDENTIAL GATE HANDLE SQUARE	\$5.31
LB124BX-KSA	LOKK BOLT 24" BLACK metal	\$86.06
LB224BX-KSA	LOKK BOLT 24" BLACK wood/vinyl	\$86.03

LOCINOX GATE HARDWARE

Code	Description	Bundle Qty	Price
LX-LAKY40FBL	Narrow Ornamental Lock, Blk 1 1/2" - 2"	10	\$73.06
*Note: Must Order ONE of the Keepers Below with Narrow Ornamental Lock			
LX-IKIT60BL	Residential Gate Keeper Offset , Black	10	\$18.07
LX-SAKLQFBL	Residential Keeper Quick Fix 1-1/2" - 4"	10	\$17.50
LX-SHKLQFBL	Security Keeper Quick Fix, Black	10	\$21.34

Latch Kits

LX-MSGK-S	Mechanical Code Swing Gate Lock Silver	10	\$429.76
LX-SSGK-S	Industrial Security Swing Gate Lock Silver	10	\$119.70
LX-CGK-S	Cantilever Gate Lock Silver	10	\$137.25

*** All Latch Kits include Lock, Keeper, Round Post Adapters, and Chain Link Adapter**

ORNAMENTAL GATE HARDWARE

* Black

Code	Description	Price
CH100N-BK*	Cornerstone Nylon Self-Close Hinge 4"	\$32.03
NW308-26*	The Protector - Magnetic Pool Latch 10" High	\$41.36
NW276NE-26*	The Protector - Magnetic Pool Latch 19-1/2" High	\$33.48

SWING GATE WHEEL

SGW-P	For Pipe	900	5	\$53.13
SGW-W	For Wood	1000	5	\$55.27
<u>SWING GATE WHEEL — SWIVEL — FOR PIPE</u>				
SGW-S15	For 1-5/8" Pipe	900	5	\$48.64
SGW-S20	For 2" Pipe	1000	5	\$48.64
SGW-S	Swivel Wheel w/ Spring		5	\$35.49



Code		Wt. Per 100	Bundle Quantity	Price	
------	--	----------------	--------------------	-------	--

INDUSTRIAL HINGES

INDUSTRIAL ARM HINGE — MALLEABLE

AHM-25	2-1/2"	440	12	\$8.93
AHM-3	3"	460	12	\$11.73
AHM-4	4"	550	12	\$14.28
AHM-65	6-5/8"	1090	4	\$20.83



INDUSTRIAL ARM HINGE — PRESSED STEEL — 180° Degree Heavy Duty

AHP-25	2-1/2"	300	12	\$9.45
AHP-3	3"	400	12	\$9.65
AHP-35	3-1/2"	375	10	\$18.96
AHP-4	4"	450	12	\$10.05
AHP-45	4-1/2"	450	10	\$26.81
AHP-65	6-5/8"	750	4	\$17.98



INDUSTRIAL BOX HINGE — MALLEABLE

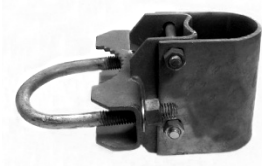
Fits 1-5/8" or 2".

BHM-25	2-1/2"	400	12	\$9.25
BHM-3	3"	400	12	\$9.60
BHM-35	3-1/2"	430	12	\$16.59
BHM-4	4"	450	12	\$12.50
BHM-65	6-5/8"	1140	4	\$21.98
BHM-85	8-5/8"	1650	4	\$31.33



INDUSTRIAL HINGE SET — BULLDOG — Pressed Steel U Bolt


BHP-25B	2-1/2"	270	12	\$7.36
BHP-3B	3"	280	12	\$8.89
BHP-35B	3-1/2"		10	\$31.21
BHP-4B	4"	310	12	\$9.91
BHP-45B	4 1/2"	325	12	\$25.49
BHP-65B	6-5/8"	500	4	\$15.82




Code		Wt. Per 100	Bundle Quantity	Price	
------	--	----------------	--------------------	-------	--

INDUSTRIAL HINGES


INDUSTRIAL HINGE SET — PRESSED STEEL

BHP-25	2-1/2"	370	12	\$6.62	
BHP-3	3"	430	12	\$8.05	
BHP-4	4"	680	12	\$9.70	
BHP-65	6 5/8"	750	12	\$13.03	

INDUSTRIAL HINGE SET — PRESSED STEEL — Domestic

BHP-25D	2-1/2 "	350	12	\$19.91	
BHP-3D	3"	441	12	\$20.36	
BHP-4D	4"	475	12	\$21.55	
BHP-65D	6-5/8"	750	6	\$35.91	
BHP-85D	8-5/8"	850	6	\$40.10	


INDUSTRIAL BALL & SOCKET HINGE — MALLEABLE — Page

BSH-305	3" x 1-5/8"	925	4	\$112.11	
BSH-302	3" x 2"	1025	4	\$141.04	
BSH-402	4" x 2"	1035	4	\$168.18	
BSH-652	6-5/8" x 2"	1236	2	\$214.35	


180° DEGREE ADAPTER — Fits 2" Butt Plate

ADAPT-2	Allows Full Swir	530	10	\$11.77
---------	------------------	-----	----	---------

INDUSTRIAL HINGE BEARING PLUG

HBP-15	1-5/8"	130	6	\$3.05	
HBP-2	2"	133	6	\$3.22	

BEARING WASHERS

BW-15	1-5/8"	15	100	\$1.27	
BW-2	2"	15	100	\$1.60	

Code	Item	Wt. Per 100	Bundle Quantity	Price
------	------	----------------	--------------------	-------

INDUSTRIAL LATCHES - SINGLE GATES

INDUSTRIAL DROP FORK LATCH — PRESSED STEEL

Allowance is 1-5/8".

SL-305	3" x 1-5/8"	325	20	\$12.01
SL-302	3" x 2"	340	20	\$12.46
SL-402	4" x 2"	365	20	\$13.20



INDUSTRIAL FULCRUM LATCH — ANCHOR

IFL-302A	3" x 2"	350	10	\$21.71
IFL-402A	4" x 2"	450	10	\$22.25



STRONGARM LATCH

SAL-3	3" x 2"	350	15	\$48.65
SAL-4	4" x 2"	375	15	\$52.51



INDUSTRIAL AUTOMATIC SWING LATCH — Malleable — PAGE

SWL-4	4"	404	10	\$40.38
SWL-WALL	Flat Wall	253	10	\$18.35



CENTERSTOPS

CS-A	Aluminum	170	10	\$5.50
CS-P	Pressed Steel	116	25	\$5.98
CS-M	Malleable	370	10	\$7.48



HOLDBACKS

HB-M	Malleable	248	25	\$5.57
HB-P-A	Pressed Steel Domestic			\$13.12



DROP RODS

DR-30	1/2" x 30"	165	10	\$2.37
-------	------------	-----	----	--------

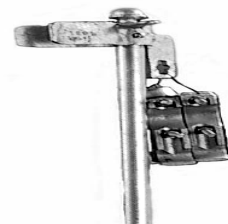


Code	Item	Wt. Per 100	Bundle Quantity	Price
------	------	----------------	--------------------	-------

INDUSTRIAL LATCHES - DOUBLE DRIVE GATES

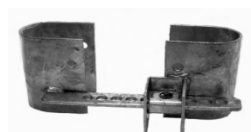
PAGE DOUBLE DRIVE LOCKING DEVICE — Malleable

DD-15P	1-5/8"	900	5	\$164.58
DD-2P	2"	950	5	\$165.59



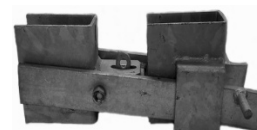
FENCE-LOC — CARGO PROTECTORS — POSITIVE

DD-FFLB	Locks on one side — 1 5/8" or 2	20		\$34.08
---------	---------------------------------	----	--	---------



PIONEER LATCH

DD-PIONEER			15	\$79.53
------------	--	--	----	---------



STRONGARM LATCH — 1 5/8" or 2" — ADJUSTABLE 2" to 8"

DD-SAL	Strong-arm Latch		6	\$62.40
DD-SALB	Strong-arm Latch - Black			\$84.78
DDR-SAL	Residential Strong-arm Latch		12	\$32.52
DD-SALI	Strong-arm Latch-Imp		12	\$58.10



DDR-SALI	Residential Strong-arm Latch-In		10	\$33.39
----------	---------------------------------	--	----	---------



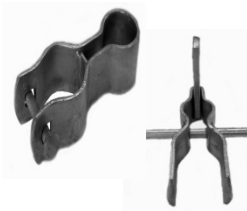
INDUSTRIAL LATCHES - DOUBLE DRIVE GATES

DD-IMP	1-5/8" or 2"	86	8	\$19.96
--------	--------------	----	---	---------



INDUSTRIAL DOUBLE DRIVE LOCKING DEVICE — FORK & GUIDES

DD-15G	1-5/8" Guide	98	75	\$2.80
DD-2G	2" Guide	105	75	\$3.12
DD-FC	1-5/8" or 2"	105	50	\$2.06
DD-FC15	1-5/8" Welded Kit			\$26.98
DD-FC2	2" Welded Kit			\$27.68



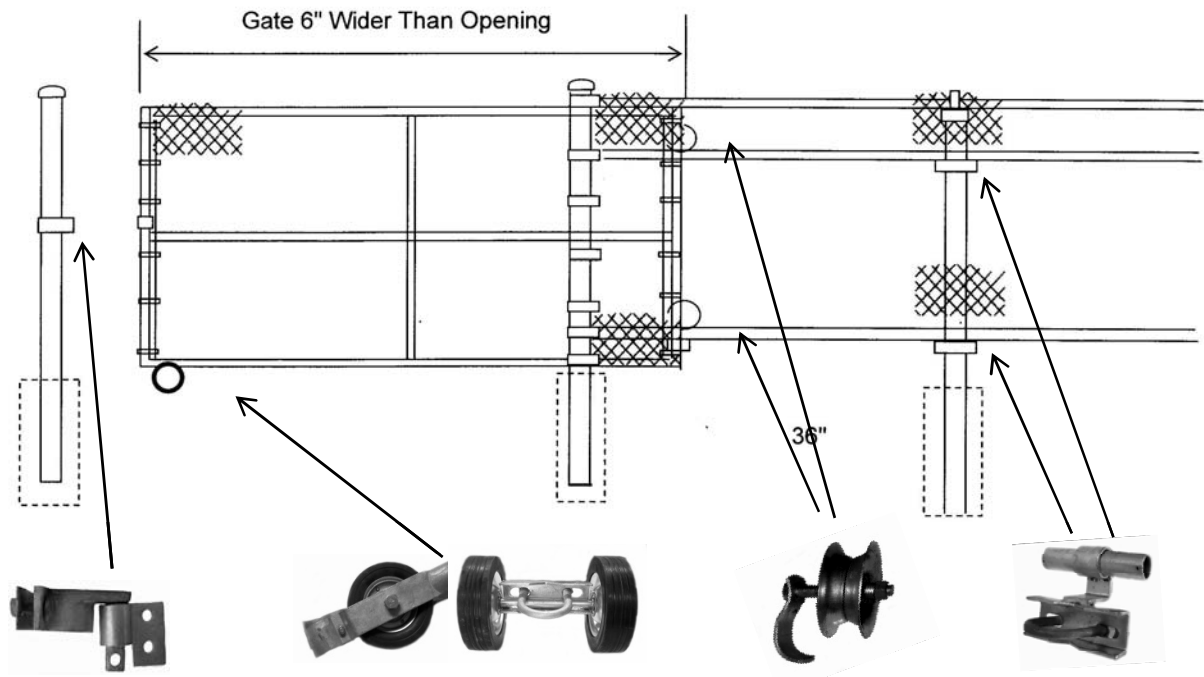
ANCHOR INDUSTRIAL DOUBLE DRIVE LATCH & DROP ROD

Welded on to gates.

DD-2A	2" x 2" Latch		10	\$6.43
DR-26A	1-1/16" x 26" Drop Rod		10	\$21.07



ROLLING GATE HARDWARE



FITTINGS NEEDED FOR THE INSTALLATION OF A ROLLING GATE:

- (1) - Front Wheel - Single or Double Wheel Carrier
- (1) - Locking Device
- (4 - 6) - Track Brackets (To attach 1-5/8" pipe to line and gate posts.)
- (2) - Rear Wheel for Track
- (2) - Brackets for Rear Wheels (Attach to the gate frame)

Code	Item	Wt. Each	Price Each
------	------	-------------	---------------

SINGLE WHEEL CARRIER

SWC-156	1-5/8" Frame - 6" Wheel	5	\$16.63
SWC-158	1-5/8" Frame - 8" Wheel	6	\$19.57
SWC-206	2" Frame - 6" Wheel	5	\$24.65
SWC-208	2" Frame - 8" Wheel	6	\$30.52



RESIDENTIAL DOUBLE WHEEL CARRIER

DWC-6R	1-5/8" or 2" - 6" Wheel	7	\$31.56
DWC-8R	1-5/8" or 2" - 8" Wheel	10	\$35.50

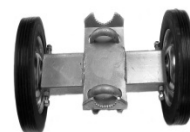


Code	Item	Wt. Each	Price Each
------	------	-------------	---------------

ROLLING GATE HARDWARE

INDUSTRIAL DOUBLE WHEEL CARRIER

DWC-6I	6" Wheel		\$35.55
DWC-8I	8" Wheel		\$37.58



PNEUMATIC DOUBLE WHEEL CARRIER — 10" WHEELS

DWC-RR	Rut Runner		\$61.88
--------	------------	--	---------



BRACKET FOR REAR WHEEL — HEAVY DUTY — WITHOUT BOLT

RWB-15	1-5/8" with 5/8" Hole	0.7	\$1.83
RWB-2	2" with 5/8" Hole	0.8	\$1.93



REAR WHEEL — 1-5/8" PIPE TRACK — NEED (2)

RWP-5	5" Diameter Pressed Steel	2.6	\$11.83
-------	---------------------------	-----	---------



FLAT TRACK BRACKET

FTB	For 1-5/8" Track	1.4	\$5.88
-----	------------------	-----	--------



RESIDENTIAL TRACK BRACKET — USE (2)-BRACE BANDS

RTB	For 1-5/8" Track	1.1	\$5.43
-----	------------------	-----	--------



UNIVERSAL TRACK BRACKET — HEAVY DUTY

UTB-152	For 1-5/8" or 2" Post	2.5	\$8.05
UTB-253	For 2-1/2" or 3" Post	2.6	\$8.37



LOK-N-LATCH — USE (2)-BRACE BANDS

LL-STD	Standard for Double Gates		\$13.83
LL-90	Off-set for Single Gates		\$13.83



ROLLO LATCH — MALLEABLE — FOR 1-5/8" or 2" FRAMES

Also need (2)-heavy bands to attach female piece to the gate post.

MP-15/2	Male and Female Parts		\$5.59
---------	-----------------------	--	--------



Code	Item	Wt. Per Each	Bundle Quantity	Price
------	------	-----------------	--------------------	-------

CANTILEVER GATE FITTINGS

CANTILEVER ROLLER ASSEMBLY

CR-3H	3" x 2-1/2"	15.8	4	\$112.18
CR-4H	4" x 2-1/2"	18	4	\$115.37
CR-65H	6-5/8" x 2-1/2"		4	\$144.17

An 8-5/8" cantilever roller is available, but not a Hampden roller.



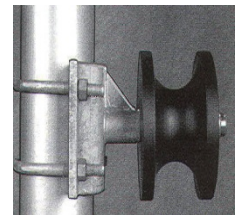
CANTILEVER ROLLER ASSEMBLY

CR-3HI	3" x 2-1/2"	17	4	\$63.45
CR-4HI	4" x 2-1/2"	18	4	\$67.83



CANTILEVER ROLLERS — NYLON (DAC) 2,200#

CR-P	4" x 2-1/2"	11	4	\$183.54
CR-P65	6-5/8" x 2-1/2"	15	4	\$276.30



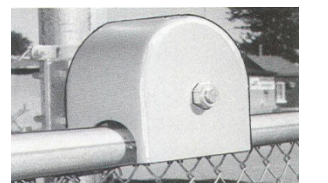
CANTILEVER ROLLERS — IMPORT — NYLON

CR-3PI	3" x 2-1/2" (Each)	13	4	\$106.05
CR-4PI	4" x 2-1/2" (Each)	14	4	\$115.86
CR-4PC	4" x 2-1/2" (Pair) Roller + Cover			\$252.36

FOR SAFETY - CANTILEVER COVERS ARE STRONGLY RECOMMENDED FOR ALL GATES

CANTILEVER COVER — POLYETHYLENE PLASTIC

CR-PC	Roller Cover	3	1	DAC ONLY	\$55.68
CC-V	Roller Cover (Pair - fitting Poly Import & Steel) 1 Top and 1 Bottom - Need 2 for 4 Rollers				\$53.75



Code	Item	Wt. Per Each	Bundle Quantity	Price
------	------	-----------------	--------------------	-------

CANTILEVER GATE FITTINGS

CANTILEVER BARBWIRE ARM

Welded on to a heavy steel clamp.

CANT-ARM	2"	7	12	\$12.61
----------	----	---	----	----------------

CANTILEVER GATE LATCH

CGL-2	2" Latch Piece	7.9	1	\$2.09
-------	----------------	-----	---	---------------

CPL-3	For 3" Post	5.3	8	\$14.69
-------	-------------	-----	---	----------------

CPL-4	For 4" Post	6.9	8	\$16.52
-------	-------------	-----	---	----------------



AUTO GATE OPERATOR LATCH

Adjustable from 3" to 7".

MAC-3	3" Gate Post			\$82.99
-------	--------------	--	--	----------------

MAC-4	4" Gate Post			\$85.12
-------	--------------	--	--	----------------



ANCHOR GATE REPLACEMENT FITTINGS

GRA-LH	Guide Roller Assembly - Right Hand			\$122.05
--------	------------------------------------	--	--	-----------------

GRA-RH	Guide Roller Assembly - Left Hand			\$122.05
--------	-----------------------------------	--	--	-----------------

TA-A	Anchor Truck Assembly			\$119.70
------	-----------------------	--	--	-----------------

SB-A	Slide Gate Stop			\$9.14
------	-----------------	--	--	---------------

TB-A3	3" Track Bracket			\$34.43
-------	------------------	--	--	----------------

TB-A4	4" Track Bracket			\$63.84
-------	------------------	--	--	----------------

Code	Item	Wt. Each	Price
------	------	-------------	-------

OVERHEAD SLIDE GATE HARDWARE

OVERHEAD "I" BEAM — GALVANIZED — 4" x 6" — 12-1/2 # / FT

IBEAM-20	20'	250	\$541.04
IBEAM-40	40'	500	\$1,082.09



OVERHEAD SLIDE GATE HARDWARE — MALLEABLE

While Supply Lasts.

OSG-TBM	4" Track Bracket	1	\$71.30
---------	------------------	---	---------

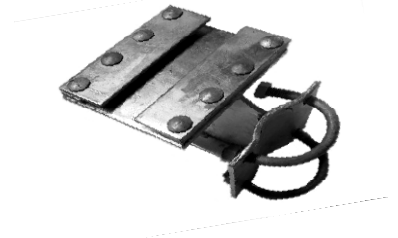


TROLLEY ASSEMBLY — PRESSED STEEL

OSG-TPH	Horizontal Attac	7	\$57.40
OSG-TPH-D	Horizontal Double Wheels		\$113.57
OSG-TPV	Vertical Attachm	7	\$44.16

BEAM HANGER ASSEMBLY

OSG-H3	3" Post	12	\$27.76
OSG-H4	4" Post	13	\$45.21
OSG-H6	6-5/8" Post	20	\$84.53
OSG-H4D	4" Post - Double	15	\$52.51
OSG-SP	Splice Plate	1	\$3.04



GUIDE ASSEMBLY

OSG-G3	3" Post	6	\$18.68
OSG-G4	4" Post	7	\$23.48
OSG-G6	6-5/8" Post	9	\$30.28



STOP ASSEMBLY

OSG-S3	3" Post	6	\$22.08
OSG-S4	4" Post	7	\$22.72
OSG-S6	6-5/8" Post	9	\$25.23



LOCKING STOP ASSEMBLY

OSG-L3	3" Post	6	\$13.87
OSG-L4	4" Post	7	\$15.13
OSG-L6	6-5/8" Post	9	\$18.30
OSG-LB2	2" Locking Bracl	3	\$1.51



Code	Item	Each	Price
------	------	------	-------

BARN TRACK FITTINGS

BARN TRACK — GALVANIZED — DOUBLE TRACK NEEDS TRACK BRACKETS

This track will support a door of 400 pounds.

CT-10D	10' Track	17	\$41.65
CT-12D	12' Track	20	\$50.04
CT-16D	16' Track	27	\$66.71
CT-20D	20' Track	34	\$83.38
CT-24D	24' Track	41	\$100.07



TROLLEY

CT-T	Trolley (Pair)		\$69.37
------	----------------	--	----------------



TRACK BRACKETS

CT-BS	Single Track Bracket — Includes Sleeve:		\$18.73
CT-BD	Double Track Bracket		\$26.60
	Includes (2)-Sleeves		
CT-FEB	Fixed End Bracket		\$10.96
CT-SR	Bottom Guide		\$19.87



Single track with watershed is available. This mounts on to a building.

PANIC BAR

STAINLESS STEEL

PB-SS Panic Bar **\$435.90**

Gooseneck Stands

GOP-GSR2 2" Round Gooseneck Stand Black **60.00**

2 1/2" Round Gooseneck Stand Black **70.00**

- Sch 40 Pipe
- 3/8" x 6" x 6" Base Plate Welded to Stand
- Base Plate cut out to accept 1" Conduit Extensions
- 1/4" x 4" x 4" Accessory Mounting Plate Welded to Stand
- Accessory Plate Punched to Accept Most Accessories
- 42" Height from Anchor Plate to Center of Stand
- 12" Extension of Accessories from Center of Stand
- 4 - 1/2" x 3 3/4" Wedged Anchors Included
- 4 - 1/4" x 3/4" Accessory Mounting Hardware Included
- 8" Diameter Aluminum Collar conceals Anchor Bolts
- Gloss Black Powder Coated Finish on Stand
- Custom Designs Available

2" Square Gooseneck Stand Black **68.00**

2 1/2" Square Gooseneck Stand Black **72.00**

2" Square Duplex Gooseneck Stand Black **115.00**

- 2" Sq x 14 ga Steel Tubing or 2 1/2" x 11ga Steel Tubing
- 3/8" x 6" x 6" Base Plate Welded to Stand
- Base Plate cut out to accept 1" Conduit Extensions
- 1/4" x 4" x 4" Accessory Mounting Plate Welded to Stand
- Accessory Plate Punched to Accept Most Accessories
- 42" Height from Anchor Plate to Center of Stand (42" & 84" Duplex)
- 12" Extension of Accessories from Center of Stand
- 4 - 1/2" x 3 3/4" Wedged Anchors Included
- 4 - 1/4" x 3/4" Accessory Mounting Hardware Included
- Gloss Black Powder Coated Finish on Stand

